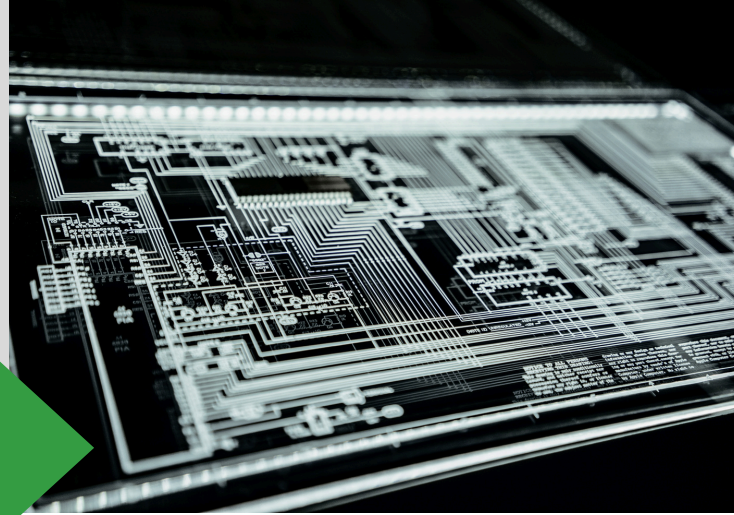




**GRISELDA  
LABS**



# CAPABILITY STATEMENT

D-U-N-S # 129395093 | CAGE CODE 9THS6

## ABOUT THE COMPANY

Griselda Labs is a minority-owned technology firm born in Boyle Heights, specializing in innovative software and IT solutions aiming to bridge the digital divide in underserved communities. While our mission centers on social good, our wide-ranging skills allow us to tackle diverse software and IT projects across various sectors.

## DIFFERENTIATORS

- **User-first Approach:** We deeply understand user needs through extensive problem exploration, ensuring our solutions are both thoughtful and effective.
- **Deliver Faster:** Proficient in agile methodologies, we quickly break complex problems into manageable iterations to expedite value delivery.
- **Innovative Solutions:** Drawing on our team's diverse industry experiences, we infuse creativity into our problem-solving, crafting unique and efficient solutions.
- **Community-Driven:** Committed to social impact, we actively engage with local communities and nonprofits, driven by empathy for underserved populations.

## NAICS CODES

- 541511 Custom Computer Programming Services
- 541512 Computer Systems Design Services
- 541513 Computer Facilities Mgmt Services
- 541519 Other Computer Related Services
- 518210 Computing Infrastructure Providers, Data Processing, Web Hosting, and Related
- 541611 Administrative Management and General Management Consulting Service
- 541618 Other Management Consulting Services
- 541690 Other Scientific and Technical Consulting Services

## CORE COMPETENCIES

- Web and App Design and Development
- AI and Machine Learning Solutions
- Agile Project Management
- User Experience (UX) Design
- Business Analysis
- Data Analytics and Visualization
- Cybersecurity Solutions
- Cloud Computing Services
- Mobile Optimization
- Multilingual and Localization Services

## CERTIFICATIONS



## BUSINESS CONTACT:

George Tellechea - CEO/ Founder

323 - 697 - 4567

george@griseldalabs.com

1908 Michigan Ave  
Los Angeles, CA 90033